

# Single Roller Shade

Manual with 4" Fascia

## Quick Facts:

Finished width: 12" – 120"\*

Minimum mounting depth: 2.5"

Minimum mounting depth, flush mount: 4.25"

Brackets are universal for ceiling, wall, or end mount installations

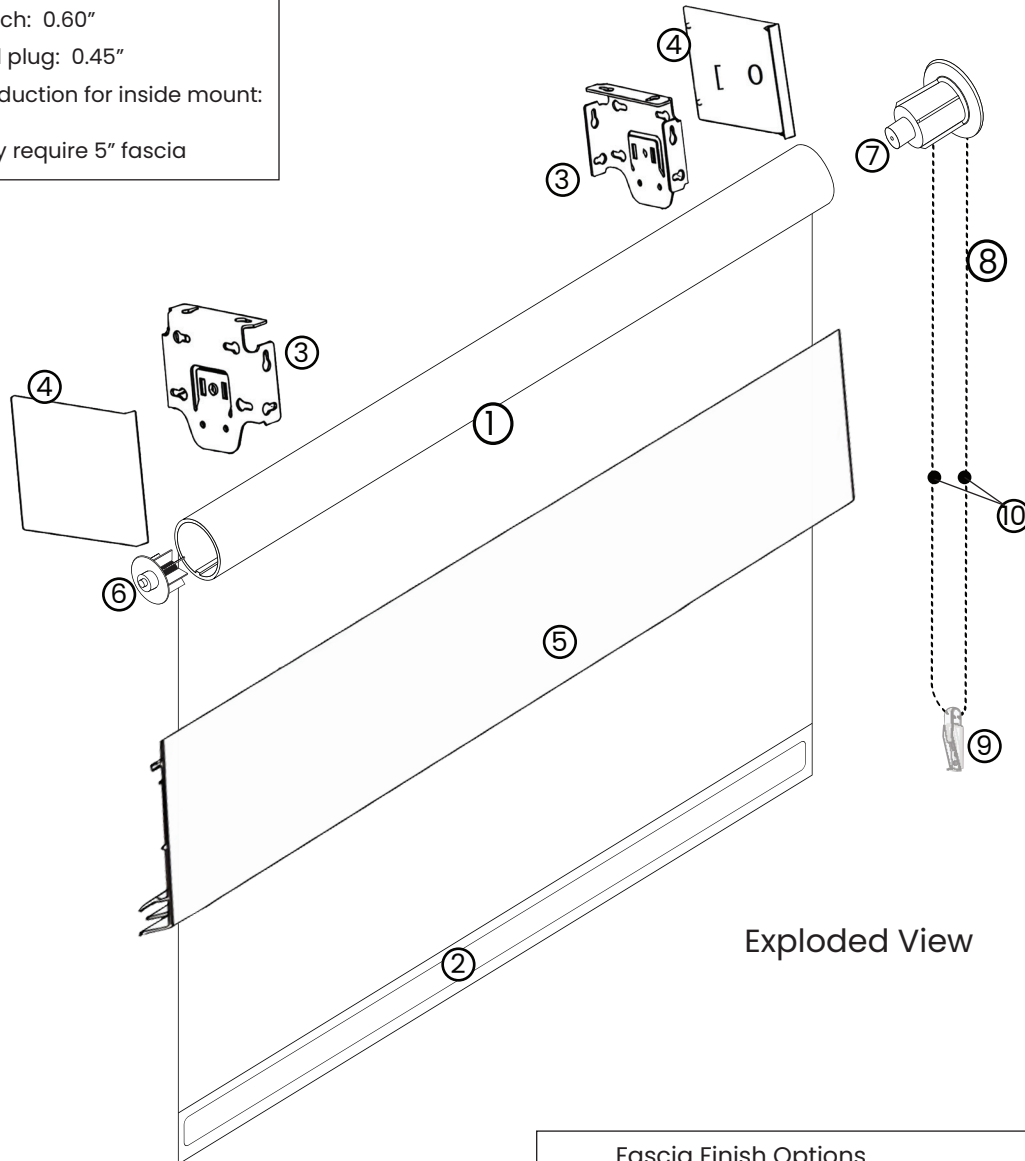
Bracket finish: Anodized aluminum

Panel deduction, clutch: 0.60"

Panel deduction, end plug: 0.45"

Standard factory deduction for inside mount: 0.25"

\* Heavier fabrics may require 5" fascia



## Fascia Finish Options



1. Fabric panel
2. 1.5" Internal hem bar
3. 4" Fascia bracket
4. 4" Fascia bracket cover
5. 4" Fascia
6. End Plug
7. Clutch
8. Stainless steel chain
9. ANSI compliant safety tensioner
10. Ballstops

JUSTIN DAVID  
TEXTILES

# Single Roller Shade

With 4" Fascia

